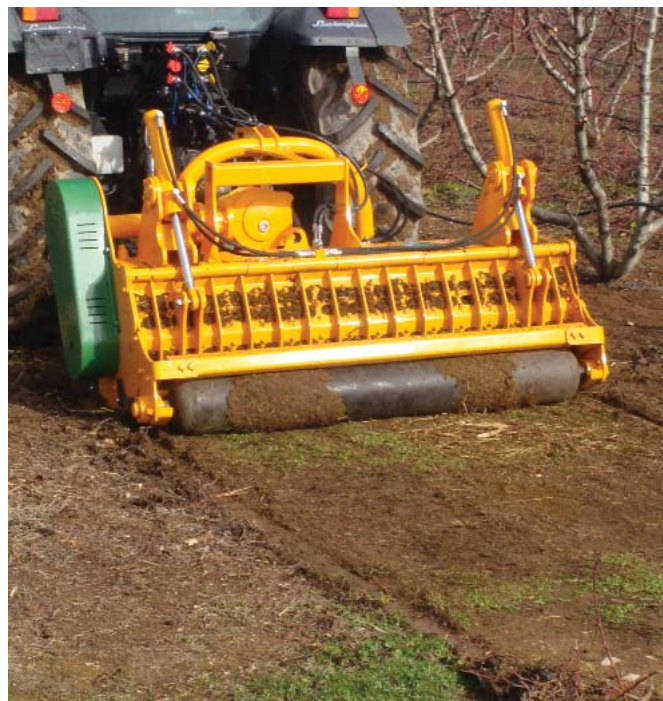




**AGRÍCOLA PRO**  
DESPLAZABLE CON PORTÓN



Polyvalent mulcher with hydraulic offset for the elimination of remains of pruning, in citrus fruits, fruit trees, olive trees and clear of matter in foot.

Rear hydraulic gate with sieve, replaceable breakers and roller of control for the soil.

It allows to be employed at both directions, attacking big volumes, at the same hooking position.

It protects the tractor of pricks and breakdowns not having to tread on the material to mulch.

### **CHARACTERISTICS**

Steel-plate chassis, thickness 10 mm.

Rotor POLSER of 550 mm of diameter.

Gearbox SERRAT.

SPCX side belt transmission.

Stamped hammers.

Hammers guaranteed against breakage.

GIROSTOP System.

Supports of bearing rotor in steel.

Oscillating bearings of double row of rollers.

Front protection curtain.

Obturations antiwire in rotor.

Double bearing on rear roller.

Height-adjustable rear roller.

PTO 540 rpm.

11 lines of counter hammers.

Rear hood with sieve.

Front skid shoes.

Model built under EC Normative.

Safety indicators visible to personnel.











GIROSTOP System



Rotor POLSER



Rear hood with sieve  
System antiwire in rotor

MODEL											
	mm	KW-HP			A mm	A in	B mm	B in	C mm	C in	
T-1500	1500	51 - 70 96 - 130	12	960	1721	68"	1345	53"	1147	45"	540
T-1600	1600	55 - 75 96 - 130	12	991	1821	72"	1345	53"	1147	45"	540
T-1800	1800	59 - 80 96 - 130	16	1073	2021	80"	1345	53"	1147	45"	540
T-2000	2000	63 - 85 96 - 130	16	1164	2221	87"	1345	53"	1147	45"	540
T-2300	2300	66 - 90 96 - 130	20	1238	2521	99"	1345	53"	1147	45"	540

### OPTIONS

- Freewheel on sleeve.
- Adjustable rear wheels.
- Closed rear hood.
- Freewheel on transmission.
- Roller of 210 mm of diameter.



Rear wheels



Closed rear hood

